





## THE EVOLUTION OF COLOUR TRENDS

The Sikkens Global Aesthetic Center is committed to helping specifiers create better, more comfortable spaces with credible, on-trend colours. Each year, it invites a group of design experts to share their global trend knowledge. Using these insights and a wealth of colour expertise, the team then chooses a Colour of the Year, and builds four new, easy-to-use paint palettes around it.

### LAST YEAR

In 2021, we saw unprecedented global change. This led Sikkens to develop palettes around a warm, natural tone – Brave Ground™. Evoking stability, growth and potential, this harmonious, bolstering tone provided a firm foundation and helped to create balanced, restorative and unifying spaces across all sectors.

### THE WORLD TODAY

The effects of a global pandemic have accelerated change in all aspects of our lives and brought key questions into sharper focus. When we can work from home, what should we do with the office? When nature feels vital to our wellbeing, how can we keep it close? And, when we can be digitally available 24/7, how can we balance the social benefits of connectivity with our personal need to switch off?

### WHAT DOES THIS MEAN FOR COLOR?

People want to understand how they can reinvent their surroundings, making them flexible and adaptable to accommodate changing needs. They want to know how they can integrate nature into daily life so its positive benefits can be felt by everyone. They want to know how to create soothing spaces as a restorative escape from everyday stress. And they want to embrace a fresh approach to living, welcoming new perspectives and ideas. They need a colour that brings a breath of fresh air.



Above: our experts consider the trends that will influence the Sikkens colours for 2022



Images: Cover top left & bottom right: Unsplash  
Bottom left: Shutterstock

## COLOUR OF THE YEAR 2022

# BRIGHT SKIES™

Sikkens Colour of the Year 2022 is an airy, light blue that's fresh, open and invigorating. Reflecting the limitless skies around us, it delivers a flavour of the natural world and brings a breath of fresh air to a space. Used alongside a range of complementary palettes, Bright Skies™ is the perfect colour for updating both interiors and exteriors across a wide range of sectors and environments.

## PALETTES

Around Bright Skies™, we've built four inspiring and adaptable palettes that offer a variety of colour combinations for specific sectors. These easy-to-use palettes provide specifiers around the world with a comprehensive suite of on-trend, credible colours that can refresh interiors and exteriors across every sector, improving spaces and delivering inspiring results for both clients and users.



# INTERIOR PALETTES

## WORKSHOP COLOURS

BRIGHT AND UPLIFTING



### ADAPTABLE SPACES

Uplifting and refreshing, these are colours that hold their own, that look good together and that work perfectly with Sikkens Colour of the Year. They are ideal for transforming hard-working environments that need to perform several roles at once. Complementary yet contrasting, Workshop tones can effectively define and single out separate 'zones' in a multipurpose space.

D3.32.55 60YR 31/368	B6.05.73 10YR 57/080
G4.40.80 65YY 70/540	F9.20.70 49YY 54/251
COLOUR OF THE YEAR T0.10.70 14BB 55/113	J3.14.63 30GY 41/173
E4.22.49 00YY 26/220	F6.55.54 34YY 31/502
LN.00.87 11GY 85/016	S7.19.59 06BB 39/179

## GREENHOUSE COLOURS

FRESH AND VITAL



### VITAL SPACES

Feeling connected to nature is good for wellbeing, and these colours bring in the positive feel of the outside world. Taken from nature's own palette, they can make any space feel fresher. In a rural setting, they can bring in a sense of the surrounding landscape; in the city, they can deliver a welcome reminder of green space and fresh air – something that's been shown to make people feel better.

S9.03.81 10BB 73/039	G4.05.81 65YY 71/071
J5.03.71 45GY 55/052	G0.16.68 50YY 49/191
R1.10.65 50BG 44/094	COLOUR OF THE YEAR T0.10.70 14BB 55/113
N1.06.61 50GG 40/064	G5.17.58 70YY 34/180
S0.10.50 87BG 27/077	F3.28.38 30YY 17/209

## STUDIO COLOURS

SUBTLE AND CONSOLING



### SOOTHING SPACES

The subtle tones of the Studio palette can add warmth and softness to any space, private or public. Used on their own or set against the freshness of Bright Skies™, these airy, inspiring tones can maximise daylight and soothe the soul. These are colours that can help to create the feel of a consoling retreat – somewhere that can provide respite from the stresses of daily life.

G0.10.75 47YY 62/143	E4.05.76 00YY 63/067
ZN.02.73 40RR 57/045	WN.02.77 24RB 66/037
W9.03.68 50RB 48/051	COLOUR OF THE YEAR T0.10.70 14BB 55/113
B7.10.59 10YR 37/143	T4.04.66 30BB 45/049
C4.30.49 29YR 27/355	ZN.02.56 50RR 32/029

## SALON COLOURS

AIRY AND UNIFYING



### OPEN SPACES

The airy, neutral tones of the Salon palette can give a space a fresh start. Neutral and complementary, Salon colours bring lightness and openness to a space, giving a fresh, forward-thinking feel. Understated natural shades that can provide a unified blank canvas for furnishing and decoration, they're the perfect ingredients for a fresh approach in any environment.

UN.00.86 50BB 83/006	GN.01.89 71YY 90/027
T3.03.81 30BB 72/040	ON.00.83 13GY 77/016
ON.00.76 88BG 62/005	FN.02.77 44YY 65/034
ON.01.70 00NN 53/000	E7.10.53 10YY 30/106
COLOUR OF THE YEAR T0.10.70 14BB 55/113	E4.06.35 95YR 16/038

Images: First from left: Shutterstock, third from left: Unsplash

# EXTERIOR PALETTES

## WORKSHOP COLOURS

BRIGHT AND UPLIFTING



Multicoloured and vibrant, this light, bright palette is perfect for adding personality to a building. Its bold, positive colours deliver energy and dynamism, and they are also ideal for defining separate elements of an exterior.

D3.32.55 60YR 31/368	COLOUR OF THE YEAR T0.10.70 14BB 55/113
LN.00.87 11GY 85/016	F6.55.54 34YY 31/502
E4.22.49 00YY 26/220	J3.14.63 30GY 41/173

## GREENHOUSE COLOURS

FRESH AND VITAL



Inspired by the tones of nature, the colours in this palette work naturally together and bring a blast of freshness to a building. They deliver a connection to the natural world that's been shown to be good for people's wellbeing.

J5.03.71 45GY 55/052	G4.05.81 65YY 71/071
COLOUR OF THE YEAR T0.10.70 14BB 55/113	G0.16.68 50YY 49/191
S0.10.50 87BG 27/077	F3.28.38 30YY 17/209

Images: Unsplash

## STUDIO COLOURS

SUBTLE AND CONSOLING

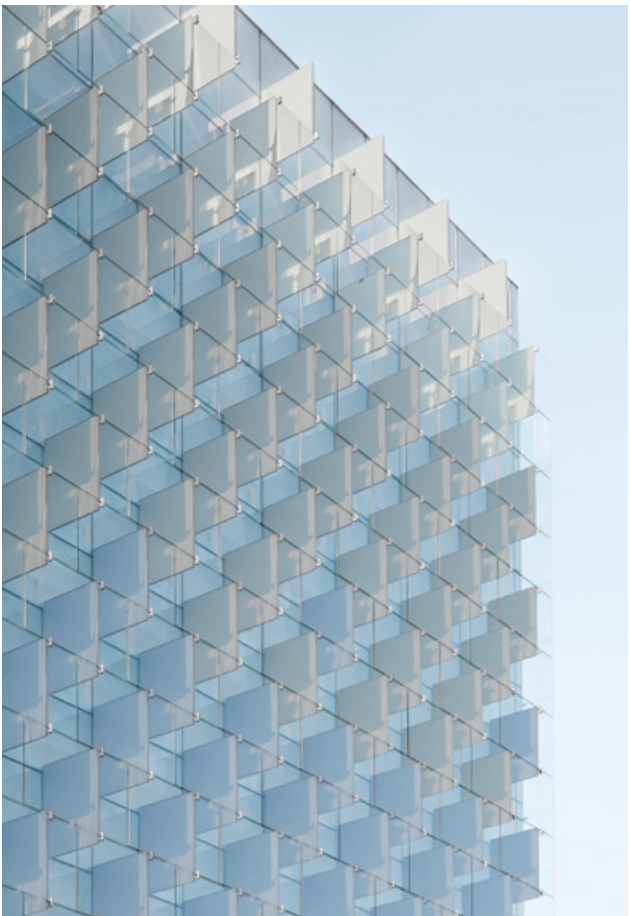


Warm and inspiring, these complementary tones can soften the feel of an exterior and add visual interest. They work well together and deliver an effective tonal balance used alongside Sikken's Colour of the Year.

G0.10.75 47YY 62/143	COLOUR OF THE YEAR T0.10.70 14BB 55/113
E4.05.76 00YY 63/067	T4.04.66 30BB 45/049
C4.30.49 29YR 27/355	ZN.02.56 50RR 32/029

## SALON COLOURS

AIRY AND UNIFYING



These neutral natural shades are ideal for adding a hint of colour to an exterior while maintaining a cohesive, unified and understated feel. Ranging in tone from earthy to airy, they can bring lightness and freshness to a building.

UN.00.86 50BB 83/006	FN.02.77 44YY 65/034
ON.01.70 00NN 53/000	E7.10.53 10YY 30/106
COLOUR OF THE YEAR T0.10.70 14BB 55/113	E4.06.35 95YR 16/038



# BRIGHT SKIES™ AND ITS PALETTES: THE PERFECT INGREDIENTS FOR FRESH SPACES

Sikkens Colour of the Year and its palettes deliver a ready-made way to help you improve spaces in any sector you work with. These on-trend, credible colours can transform buildings, both inside and out, creating comfortable and functional spaces that surpass expectations.



**EDUCATION**



**OFFICES**



**RESIDENTIAL**



**HEALTHCARE**



**HOSPITALITY**

Images: Top two & bottom two: Shutterstock





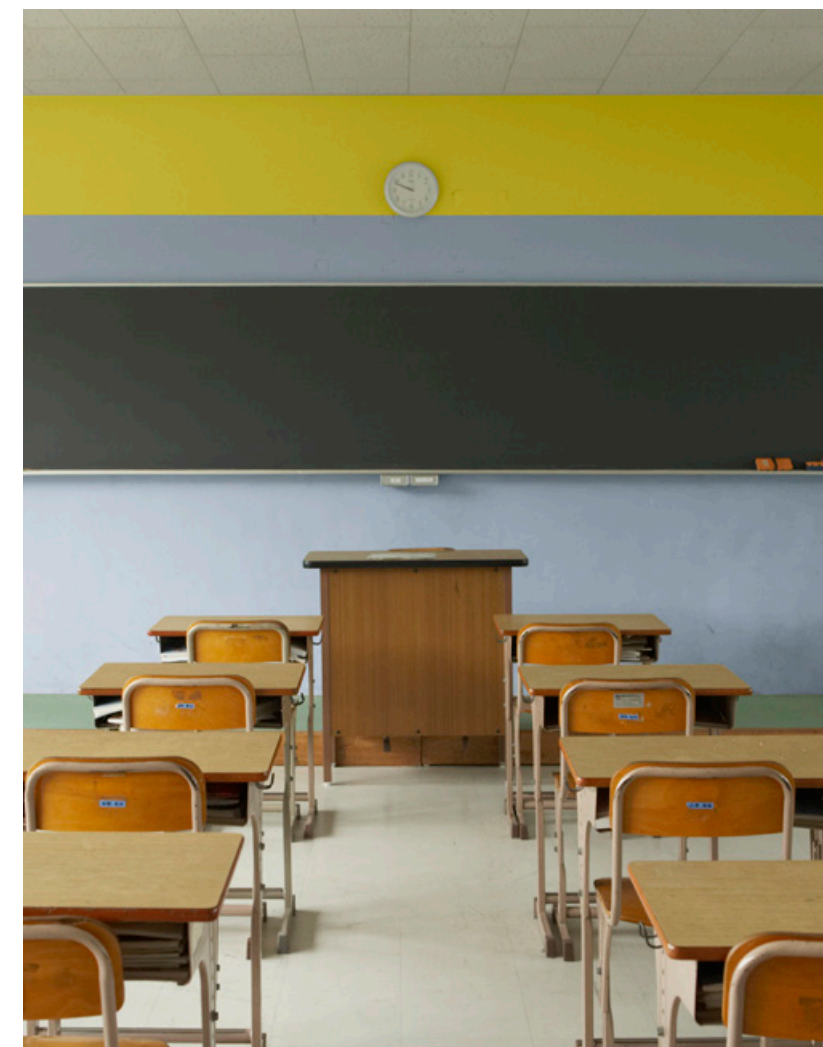
# EDUCATIONAL SPACES

An uplifting palette of bright, complementary colours creates a sense of freshness and dynamism that can support the learning process, and that also provides an effective solution for zoning different functional areas.

D3.32.55  
60YR 31/368

COLOUR OF THE YEAR  
T0.10.70  
14BB 55/113

F6.55.54  
34YY 31/502



## WORKSHOP COLOURS

### ADAPTABLE SPACES

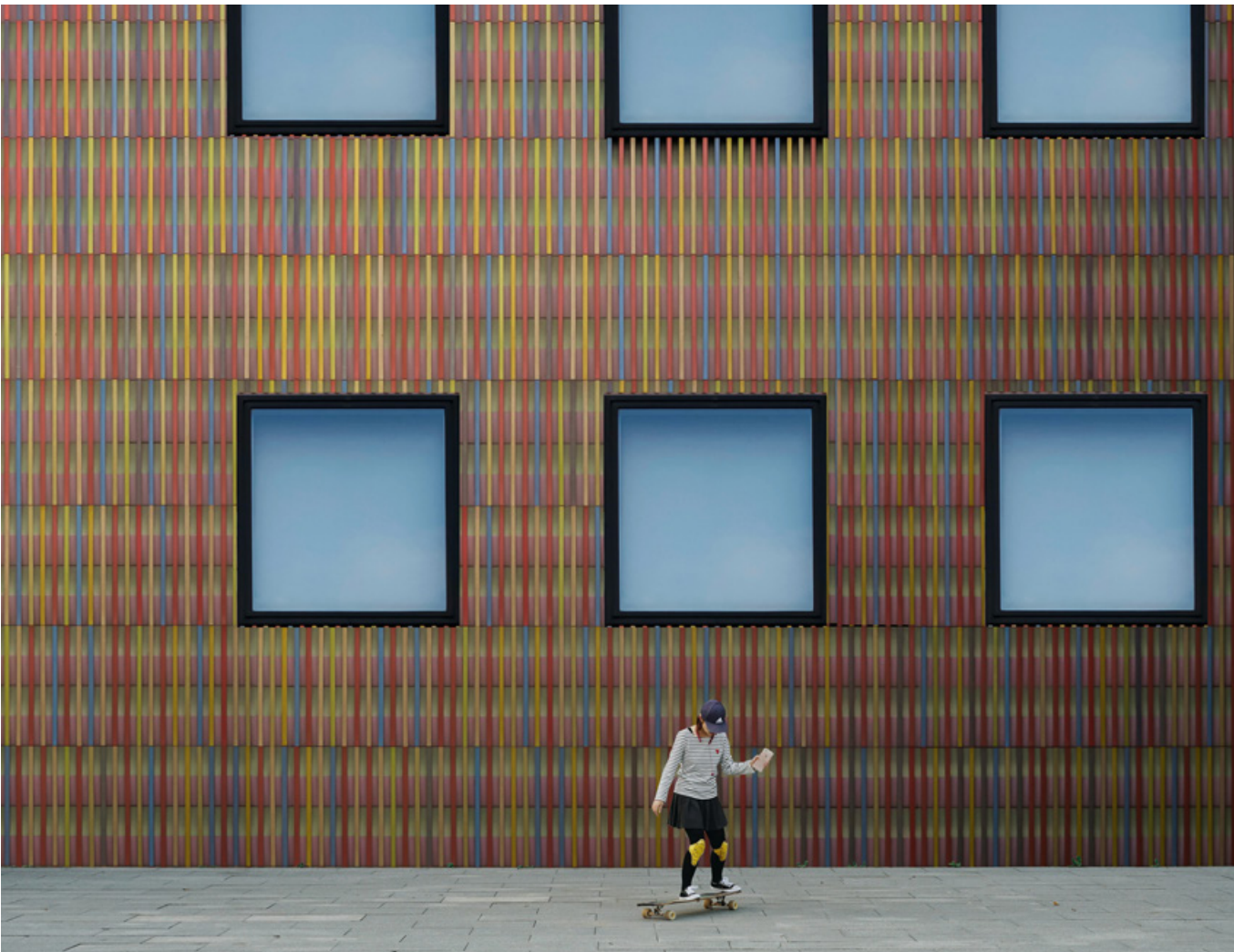
**Colours:** Bright tones bring positivity and energy to a learning environment. They also work as accent colours to 'zone' different functional areas of a space that has to fulfil more than one role.

**Relevance:** Post-pandemic, experts anticipate a need for hybrid forms of teaching and learning in different spaces<sup>1</sup>.

**Result:** A multicoloured palette works practically and emotionally in educational settings, allowing open spaces to be 'zoned' into smaller, more approachable areas and bringing dynamism to the space with colour.

Images: Getty  
1. International Commission on the Futures of Education, 2020. Education in a post-COVID world: Nine ideas for public action. Paris, UNESCO, p15





Images: Left: Getty, top right: Shutterstock, bottom right: Unsplash

LN.00.87  
11GY 85/016

COLOUR OF THE YEAR  
T0.10.70  
14BB 55/113

G4.40.80  
65YY 70/540

F9.20.70  
49YY 54/251





# OFFICE SPACES

At home or in the office, today's workspace needs to be adaptable and appealing. An increasingly digitised space, it can benefit from a connection with the natural world, and a positive, vibrant feel.



Images: Top right Shutterstock  
2. 40-second green roof views sustain attention: The role of micro-breaks in attention restoration, K. Lee, K. Williams, L. Sargent, N. Williams, K. Johnson, *Journal of Environmental Psychology*, Volume 42, June 2015, Pages 182-189, Copyright © 2015 Elsevier Ltd

## GREENHOUSE COLOURS

### VITAL SPACES

**Colours:** Tones inspired by nature, this palette of greens, blues, browns and greys can help bring in the positive feel of the natural world.

**Relevance:** Integrating natural colours into an office can help employees feel connected to nature; and time spent in the natural world has been shown to help refocus attention<sup>2</sup>.

**Result:** Natural tones can revitalise an office space, deliver a blast of freshness and help increase a sense of wellbeing. Colours that work together naturally also provide an instantly cohesive, easy-to-use decorative scheme.

F3.28.38  
30YY 17/209

COLOUR OF THE YEAR  
T0.10.70  
14BB 55/113

S0.10.50  
87BG 27/077

S9.03.81  
10BB 73/039





## WORKSHOP COLOURS

### ADAPTABLE SPACES

**Colours:** Bright, contrasting tones can add energy, help to define different areas of a multipurpose space and provide effective wayfinding.

**Relevance:** People have reassessed what they need from an office and, going forward, will want flexible, appealing spaces that offer different environments, from quiet work areas to collaborative zones<sup>3</sup>.

**Result:** Vibrant, complementary tones create an easy-to-use palette for zoning different areas of an office and can bring freshness and visual interest to what might otherwise be a sterile, tech-heavy space.

Images: Top right & bottom left: Shutterstock  
3. In times of uncertainty, flexibility is key: 41% of UK businesses said they envisioned their real estate strategies to include a greater amount of flexible, serviced or coworking space. *Re-occupancy and Reimagined Workplace Survey*, Knight Frank, 2020



COLOUR OF THE YEAR  
T0.10.70  
14BB 55/113

LN.00.87  
11GY 85/016

B6.05.73  
10YR 57/080

G4.40.80  
65YY 70/540

E4.22.49  
00YY 26/220

D3.32.55  
60YR 31/368





# RESIDENTIAL SPACES

Demands on the home have increased exponentially as people across the world have been living and working in them 24/7. Going forward, we need homes that can build a connection to nature and that feel airy and open.

COLOUR OF THE YEAR  
T0.10.70  
14BB 55/113

G5.17.58  
70YY 34/180

G4.05.81  
65YY 71/071

Images: Bottom right: Unsplash  
4. Spending at least 120 minutes a week in nature is associated with good health and wellbeing. MP White, J Grellier et al. Scientific Reports 9, Article 7730, June 2019; doi.org/10.1038/s41598-019-44097-3



## GREENHOUSE COLOURS

### VITAL SPACES

**Colours:** Made up of tones that reflect the world outside, this palette delivers a sense of connection with nature and brings in a positive feel.

**Relevance:** Spending time in nature is good for health and wellbeing<sup>4</sup>. Integrating biophilic design and natural tones into the design of a home can help to make it feel connected to the world outside.

**Result:** A palette of nature-inspired shades can revitalise a living space, bring in a breath of fresh air and help people feel in touch with nature. It also provides a ready-made cohesive decorative scheme.





## SALON COLOURS

### OPEN SPACES

**Colours:** A combination of airy neutrals, this palette can create a subtle and light 'blank canvas' in the home.

**Relevance:** With social media increasingly perpetuating a single-minded viewpoint<sup>5</sup> (and with social media use increasing<sup>6</sup>), people need to be encouraged to be open to new perspectives and influences.

**Result:** The least divisive of all shades, neutral colours and Bright Skies™ can deliver a feeling of openness, unity and inclusivity in the home. An ideal backdrop for any decorative scheme, they can also act as a springboard for new ideas.

5. How to break out of your social media echo chamber, Christopher Seneca, WIRE2, September 2020.  
6. Social media users have grown by more than 10% over the past year, taking the global total to 3.96b by the start of July 2020 - Digital 2020, Simon Kemp, DataReportal/WePios, July 2020



FN.02.77  
44YY 65/034

GN.01.89  
71YY 90/027

COLOUR OF THE YEAR  
T0.10.70  
14BB 55/113





# HEALTHCARE SPACES

In buildings where the focus is on health and wellbeing, patients, visitors and staff need a psychological escape from stress and anxiety. They need soothing, restorative spaces that can help them recuperate.

Images: Top Left & top right: Shutterstock





## STUDIO COLOURS

### SOOTHING SPACES

**Colours:** Warm neutrals, pale pinks and lilacs, these contemplative colours are soft, subtle and soothing.

**Relevance:** Lockdown highlighted the need for a psychological escape from stressful situations – something that's particularly pertinent in healthcare environments<sup>7</sup>. Warm, calming colours can help people feel more at ease.

**Result:** Calm, balanced and easy on the eye, these restorative colours can add warmth and softness to a clinical healthcare environment, and help patients, visitors and staff switch off and de-stress.

Subtle and consoling Studio colours, used with Bright Skies™, can improve the atmosphere in healthcare spaces, bringing a feeling of softness, balance and comfort to patient rooms and communal areas

Images: Top left and top right: Shutterstock  
7. 'Reviewing our minds and bodies as intrinsically connected, medicine since the time of ancient Greece has claimed that maintaining a positive state of mind can offer the conjuring effect of treating physical disease.' Barbara Marshall, CPZ, Trend Forecast





# HOSPITALITY SPACES

Whether hotel, restaurant or library – hospitality settings can offer us the opportunity to recharge and look at things from a fresh perspective. We need soothing, welcoming and inspiring spaces that give us the chance to dream.

ZN.02.56  
50RR 32/029

T4.04.66  
30BB 45/049

ZN.02.73  
40RR 57/045

COLOUR OF THE YEAR  
T0.10.70  
14BB 55/113

E4.05.76  
00YY 63/067



## STUDIO COLOURS SOOTHING SPACES

**Colours:** Warm neutrals, pale pinks, lilacs and Bright Skies™, the contemplative colours of the Studio palette are subtle, soothing and inspiring.

**Relevance:** Lockdown heightened our awareness of the emotional benefits of creativity and the need for a psychological escape from everyday challenges. Warm, calming colours can help create a retreat-like space where we feel free to dream.

**Result:** This soothing, transformative palette is perfect for hospitality spaces, offering people an inspiring retreat from daily life.

Images: Top left and bottom right: Shutterstock  
8. Where can we turn for comfort and solace, for joy and consolation? What are the consolations that bring peace of mind? It's what used to be called 'culture'. The arts, music, theatre, dance, poetry, painting and sculpture, and design. Barbara Marshall, CPZZ Trend Forecast







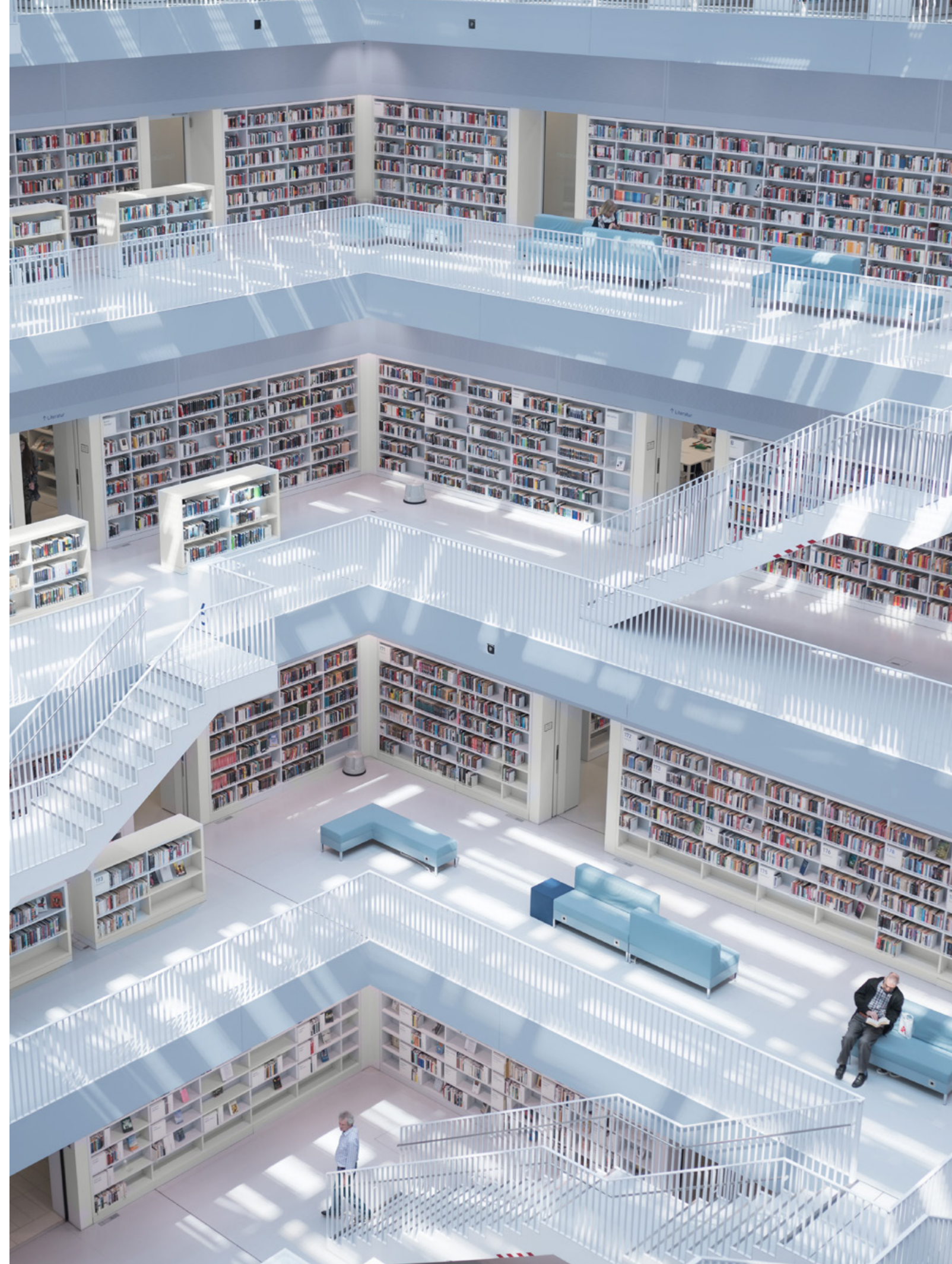
## SALON COLOURS OPEN SPACES

**Colours:** Featuring airy neutrals alongside Bright Skies™, this palette delivers a feeling of openness and unity.

**Relevance:** Experts are increasingly coming to understand that spaces that welcome the public should feel inclusive and open<sup>9</sup>.

**Result:** Complementary neutrals, these light colours open up a space and, creating a simple, plain backdrop, they can act as a 'blank canvas' for myriad cultural and social influences. These are colours that won't date and that can remain in place even when an interior scheme is changed.

Images: Left: Shutterstock  
9. 'Recent decades have brought about an increased focus on public space as part of building more inclusive and sustainable neighbourhoods and cities.' Landman, K. Inclusive public space: rethinking practices of mitigation, adaptation and transformation. Urban Des Int 25, 211–214 (2020). <https://doi.org/10.1057/s41285-020-00136-4>







#### **AkzoNobel Decorative Paints**

Global Aesthetic Center  
Amsterdam, The Netherlands  
Contact: [Media.Relations@akzonobel.com](mailto:Media.Relations@akzonobel.com)

Sikkens, Dulux Professional, Dulux Trade, the AkzoNobel logo, the Flourish logo and all distinctive colour names are trademarks of the AkzoNobel Group of Companies© and Database Right 2015.

This ColourFutures™ reference manual is and remains the property of AkzoNobel N.V. and is loaned on condition that it is used solely to specify products manufactured/or supplied by AkzoNobel N.V. (and other companies in the AkzoNobel Group) and on condition that it shall be returned to AkzoNobel N.V. on demand. The contents of this reference manual are for information only.

No representation or warranty is given, nor liability accepted, regarding the information given. We have reproduced paint colours as faithfully as printing will allow. However, the shape, size and lighting of a surface can influence the appearance of the final colour.

Design – Redwood London, [redwoodbbdo.com](http://redwoodbbdo.com)

Content – AkzoNobel Global Aesthetic Center